

BEAM PROPERTIES

$$A_B = 237,100 \text{ mm}^2$$

$$I_B = 21,125 \times 10^6 \text{ mm}^4$$

$$S_{TB} = 41,251 \times 10^3 \text{ mm}^3$$

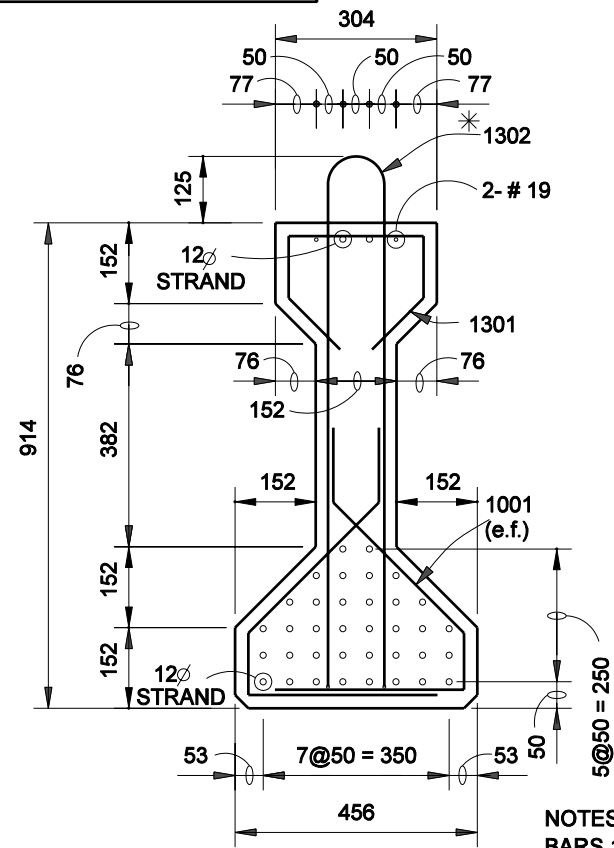
$$S_{BB} = 52,562 \times 10^3 \text{ mm}^3$$

$$Y_{TB} = 512.1 \text{ mm}$$

$$Y_{BB} = 401.9 \text{ mm}$$

$$Wt. = 5.60 \text{ kN/m}$$

* DENOTES EPOXY COATED



NOTES:
BARS 1301 AND 1302
COMBINED TO FORM
ONE STIRRUP.
BARS 25 CLEAR
UNLESS NOTED.

I - BEAM TYPE II

Figure 63-13D